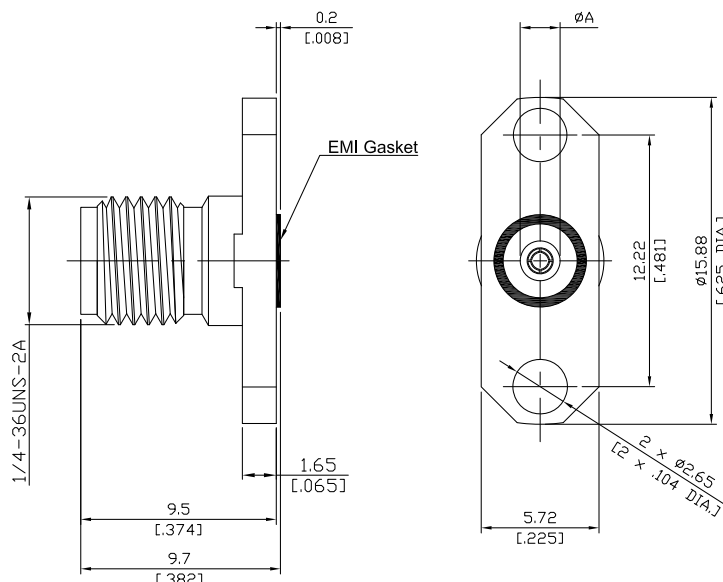


Precision SMA Jack (Female) Field Replaceable Connector with EMI Gasket
2 Hole Flange Mount .481 Hole Spacing, .015 inch Accept Pin
DC-27GHz VSWR1.15

PCA2BT50-0015A-EMI / 9X



P/N	Accept Pin mm [inch]	Max. Pin Depth mm [inch]	Ø A mm [inch]
PCA2BT50-0036A-EMI/9X	0.91 [0.036]	2.54 [0.100]	3.91 [0.154]
PCA2BT50-0020A-EMI/9X	0.51 [0.020]	2.54 [0.100]	2.67 [0.105]
PCA2BT50-0018A-EMI/9X	0.46 [0.018]	2.54 [0.100]	2.59 [0.102]
PCA2BT50-0015A-EMI/9X	0.38 [0.015]	2.54 [0.100]	1.96 [0.077]
PCA2BT50-0012A-EMI/9X	0.30 [0.012]	1.90 [0.075]	1.96 [0.077]
PCA2BT50-0009A-EMI/9X	0.23 [0.009]	1.65 [0.065]	1.52 [0.060]

All dimensions are in mm [inch]

Tolerances according to DIN ISO 2768-mH

Interface

According to

IEC 60169-15; MIL-STD-348B/310

Electrical Data

Impedance

50 Ω

Frequency

DC to 27 GHz

VSWR (Return Loss)

≤ 1.15 (≥ 23.13 dB)

Insertion Loss

≤ 0.04 x √F (GHz) dB

Insulation Resistance

≥ 5 GΩ

Center Contact Resistance

≤ 3.0 mΩ

Outer Contact Resistance

≤ 2.0 mΩ

Test Voltage

1000 V rms

Working voltage

480 V rms

Power handling

≤ 200 W @ 2 GHz

RF-leakage

≥ 100 dB up to 1 GHz

Material And Plating

Piece Parts	Material	Plating
Centre Contact	Beryllium Copper	Gold plating, 3 μinch (Non-magnetic nickel-phosphorus underplating, 80 μinch)
Body	Stainless Steel	Passivated
Insulator	PTFE	
EMI Gasket	Conductive Silicone Elastomer	

The facts and figures herein are carefully compiled to the best of our knowledge, but they are intended for general informational purposes only. In the effort to improve our products, we reserve the right to make changes judged to be necessary.

Rev.:
Date:
JUL/16/2021

Rosnol RF/Microwave Technology Co., Ltd.
www.rosnol.com; info@rosnol.com
Phone: +886-3-463-5095 / Fax: +886-3-463-5952
N-CAGE Code: SFKK0 / ISO9001 Certified

Page

1/2

Precision SMA Jack (Female) Field Replaceable Connector with EMI Gasket
2 Hole Flange Mount .481 Hole Spacing, .015 inch Accept Pin
DC-27GHz VSWR1.15

PCA2BT50-0015A-EMI / 9X

Mechanical Data

Coupling mechanisms	Screw-lock
Mating Cycles	≥ 500
Captivated Type	Mechanical
Center Contact Captivation: axial	≥ 27 N
Coupling Test Torque	1.70 Nm
Recommended Torque	0.80 Nm to 1.1 Nm

Environmental Data

Temperature Range	-65°C to +165°C
Thermal shock	MIL-STD-202, Meth. 107, Cond. B
Corrosion	MIL-STD-202, Meth. 101, Cond. B
Vibration	MIL-STD-202, Meth. 204, Cond. D
Shock	MIL-STD-202, Meth. 213, Cond. I
Moisture Resistance	MIL-STD-202, Meth. 106
RoHS	compliant

Packing

Single or 100